



## AXA-DYN/232 AXA-DYN/485

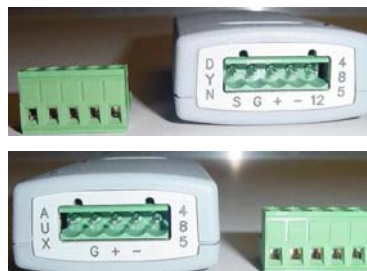
### Dynet Preset to Custom RS232 or RS485 Converter.

The AXA-DYN/232 enables devices on a Dynalite network to, via 'preset' messages, send and receive RS232 strings to 3<sup>rd</sup> party equipment that has an RS232 port. The AXA-DYN485 allows the same control of equipment that has an RS485 port.

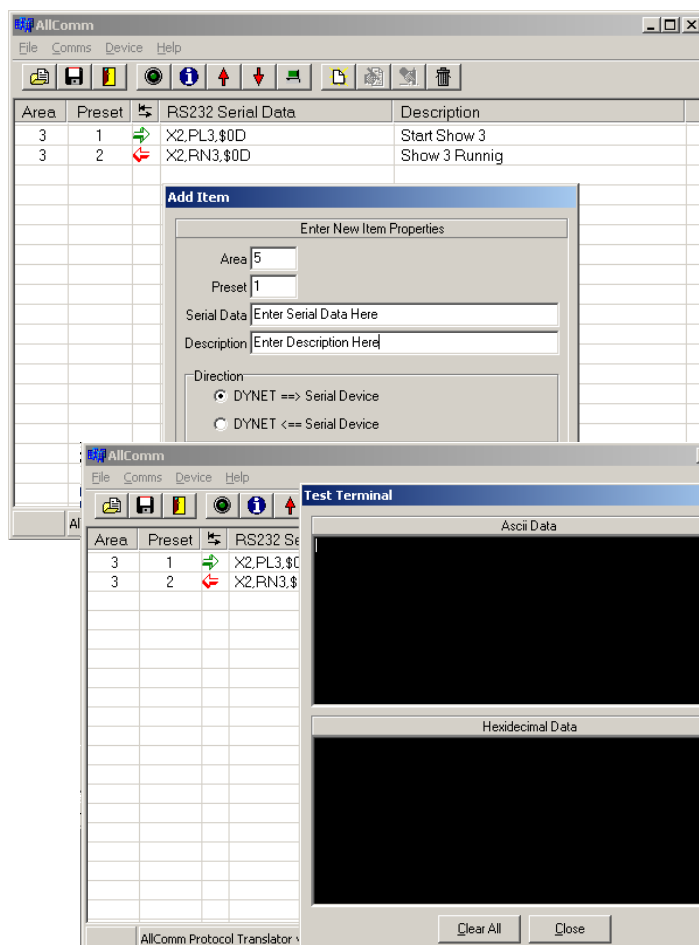
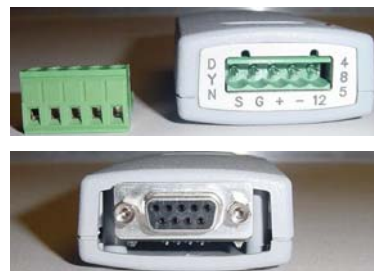
AXA-DYN/485



AXA-DYN/485 Dynet RS485 & AUX RS485 Connections



AXA-DYN/232 Dynet RS485 & AUX RS232 Connections



The Dyn/232 & Dyn/485 are user customised using the software provided. The user can specify the 'Area' & 'Preset' number that will trigger the RS232 or RS485 string to be sent as well as the 'Area' & 'Preset' number that will be transmitted back on Dynet when a specific RS232 or RS485 string is received.

The software has a built in terminal, which displays the RS232/485 data in ASCII and Hexadecimal as it from the AUX side. This facilitates easy testing before the unit is connected to the device the user is intending to control.

[www.axadesign.com](http://www.axadesign.com)