

AXA – USB/485

Optically Isolated USB to RS485 Converter



Product Operation Manual

Table of Contents

1.0	Device Overview	3
2.0	System Connections	4
3.0	System Requirements	4
4.0	System Setup	4
4.1	Windows USB Driver Setup	5
5.0	Contact Details	7
6.0	Disclaimer	7

1.0 Device Overview

The AXA-USB/485 is intended for use as a programming tool, for use with computers that don't have a standard serial communication port.

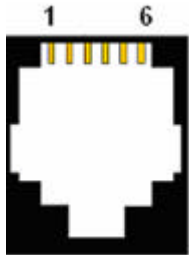
AXA-USB/485



2.0 System Connections

DyNet Connections

The two RJ12 connections on the AXA-USB/485 Converter are paralleled.



Pin 1 – N/C
Pin 2 – GND
Pin 3 – Data +
Pin 4 – Data –
Pin 5 – +12V DC
Pin 6 – N/C

3.0 System Requirements

1. Connection to a Dynalite network.
2. USB connection to a PC.

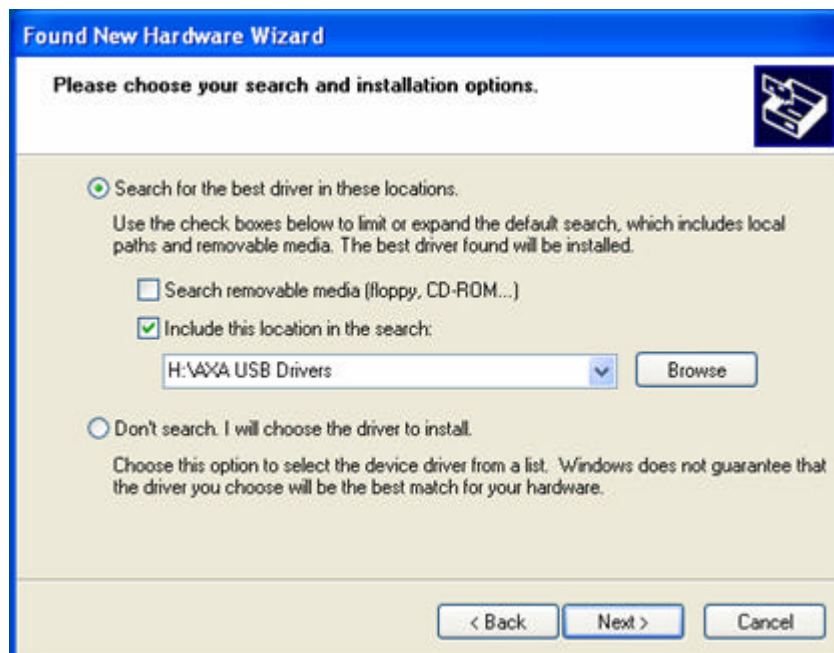
4.0 System Setup

1. Make sure the system requirements have been met.
2. Connect the AXA-USB/485 to your PC.
3. Follow the **Driver Setup** instructions.
4. Connect DyNet to either of the RJ12 connections.

4.1 Windows USB Driver Setup

NOTE – The setup procedure will run twice. The first time sets up the USB driver's and the second to setup the virtual com port

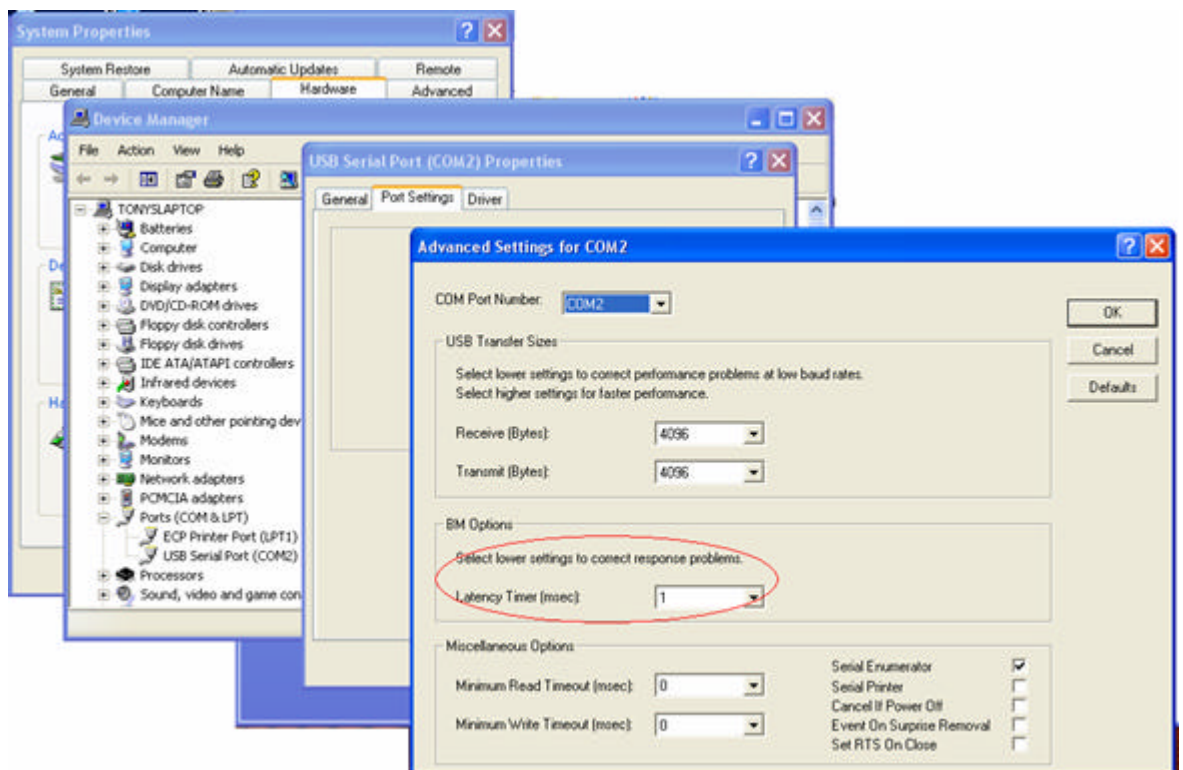
1. Connect the AXA-USB/485 to your PC using the supplied USB cable.
2. Windows will display Found New Hardware (USB <-> Serial) and the **Welcome to Found New Hardware** window will open.
3. Select **Install from a list or specific location** and click next.
4. Select **search for the best driver in these specified location.**
5. Select **include this location in the search.**
6. Specify the location of the USB drivers (Supplied with AXA-USB/485) and click next.



7. Next the **completing found new hardware** will appear and the process of driver installation is complete.

8. The final step is to adjust the USB serial port **Latency Timer** to 1 mS. To adjust the Latency Timer:

1. Go into **Control Panel** and then **System**.
2. Select **Hardware** followed by **Device Manager**
3. **Select Ports** and Select the **USB Serial Port**
4. In **Port Settings** go to **Advanced** and change the **Latency Timer** to 1mS



NOTE – Don't forget to setup the correct Comm Port in DLight or the AXA Design Configuration Utility.

5.0 Contact Details

Postal and Delivery Address

AXA Design Pty. Ltd.

Unit 5/121 Newmarket Rd.

Windsor Qld. 4030

Australia

Phone – (617) 3357 1922

Fax - (627) 3357 9189

Website - <http://www.axadesign.com>

Email - admin@axadesign.com

6.0 Disclaimer

AXA Design Pty. Ltd. reserves the right to alter specifications and design without further notice. AXA Design Pty. Ltd. will not be held responsible for the misinterpretation of printed material contained in this manual. Further enquiries should be directed to AXA Design Pty. Ltd. using the listed contact details.